

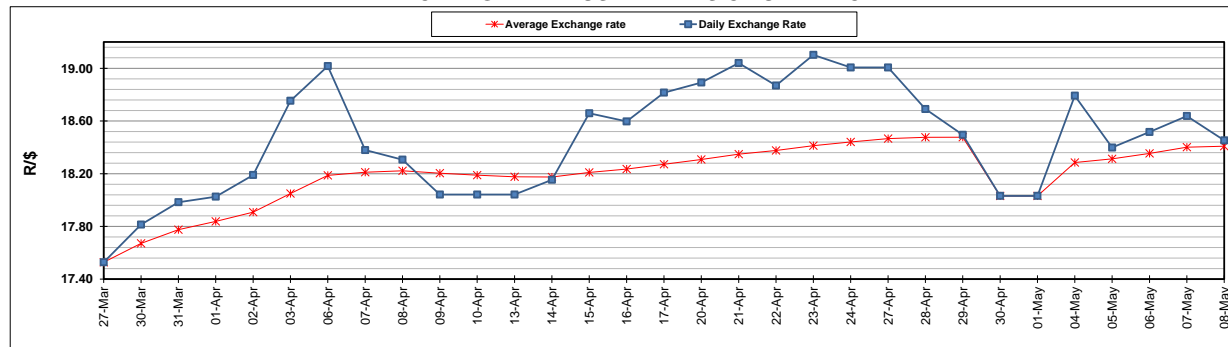
	PETROL 95 ULP	PETROL 93 ULP & LRP	DIESEL 0.05%	DIESEL 0.005%	ILL. PAR.
GAUTENG PUMP PRICE (SA c/l) AS FROM 06/05/2020	1,222.000	1,202.000	-	-	-
WHOLESALE PRICE (SA c/l) AS FROM 06/05/2020	-	-	1,108.560	1,117.960	449.828
SINGLE NATIONAL MAXIMUM RETAIL PRICE	-	-	-	-	543.000
BASIC FUEL PRICE - 08/05/2020 (SA c/l)	417.472	399.384	369.578	381.080	270.311
PRESS RELEASE CONTRIBUTION TO BFP 06/05/2020 - 08/05/2020 (SA c/l)	274.770	264.770	357.630	367.030	245.128
UNIT OVER/(UNDER) RECOVERY - 08/05/2020 (SA c/l)	(142.702)	(134.614)	(11.948)	(14.050)	(25.183)
AVERAGE BASIC FUEL PRICE 30/04/2020 - 08/05/2020	370.666	356.020	344.797	353.998	223.947
AVERAGE UNIT OVER/(UNDER) RECOVERY 30/04/2020 - 08/05/2020	3.532	8.179	104.833	102.175	148.609

ANALYSIS MOVEMENT OF AVERAGE OVER/(UNDER) RECOVERY

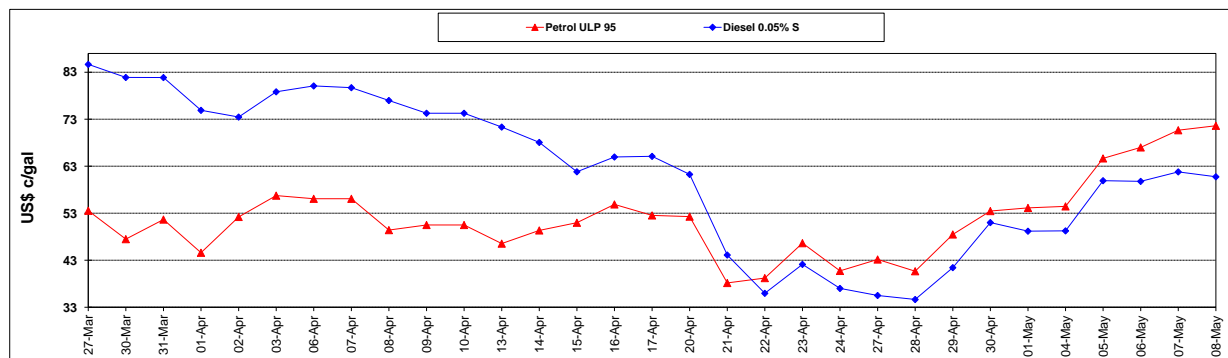
	PETROL 95	PETROL 93	DIESEL 0.05%	DIESEL 0.005%	ILL. PAR.
- MOVEMENT IN INTERNATIONAL PRODUCT PRICES	2.156	6.856	103.552	100.860	147.778
- MOVEMENT IN EXCHANGE RATE	1.377	1.323	1.281	1.315	0.832
AVERAGE UNIT OVER/(UNDER) RECOVERY 30/04/2020 - 08/05/2020	3.532	8.179	104.833	102.175	148.609

R/\$ EXCHANGE RATE - (R/\$18.4530 - 08/05/2020)

EXCHANGE RATE USED IN BASIC FUEL PRICE



INTERNATIONAL PRODUCT PRICES OF BASKET USED IN BASIC FUEL PRICE



BASIC FUEL PRICE IN SA CENTS PER LITRE

